

The original  
mechanical splicing systems.



# GERRO™ Combi Systems

*Safety Assured By Professionals Who Care*

**TALURIT™**

# GERRO™ COMBI SYSTEMS

GERRO™ COMBI is a world leading system of ferrules to be used together with GERRO™ COMBI combination rope. Investing in aluminium ferrules prolongs the lifetime of the application significantly. The system can be used for many applications such as:

- Protection nets
- Playground equipment
- Fishing equipment
- Stage equipment (theatre etc.)
- Sport and leisure

GERRO™ COMBI is designed to have a smooth surface after swaging and is swaged in special dies with rounded pocket ends.

Refer to data sheet for specific information.

All data about load and required pressure is based on assembly with GERRO™ COMBI combination rope. The maximum load value can vary due to variations in combination ropes. The value is stated in kN, where 30 kN is about 3000 kg.

The number in the article number is a reference of combination rope to be used. E.g. GC16-E is for rope diameter 16 mm.

## Eye ferrules

### GCxx-E and GCxx-EK

These ferrules are swaged over two rope parts forming an eye. The assembly can be used for different ways of anchoring. A thimble can be incorporated to avoid wear and tear. GCxx-EK is a shorter version of GCxx-E. The ferrules are swaged in press dies with rounded pocket ends.



Aluminium		
Art no.	Max load approx	Required pressure
GC16-E	30 kN	900 kN
GC16-EK	15 kN	450 kN
GC18-E	35 kN	900 kN
GC18-EK	20 kN	600 kN
GC20-E	50 kN	900 kN
GC20-EK	XX kN	XXX kN

## Bolt-joint ferrules

### GCxx-B, GCxx-BK



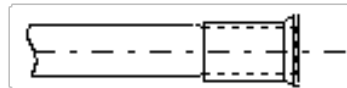
These ferrules are pressed on the end of a combination rope and can be combined with a rod with M10-thread or eyebolt. The main function of these ferrules is to attach the net or other GERRO™ COMBI application to a ground structure. GCxx-BK is a shorter version of GCxx-B.

Aluminium		
Art no.	Max load approx	Required pressure
GC16-B	15 kN	900 kN
GC16-BK	7 kN	450 kN
GC18-B	20 kN	900 kN
GC18-BK	10 kN	500 kN
GC20-B	XX kN	XXX kN
GC20-BK	XX kN	XXX kN

## T-joint ferrules

### GC16-T

The material for this ferrules is galvanized carbon steel. GC16-T is swaged directly on the combination rope as a stop. It can also be used in combination with other net constructing systems. Special dies can change the profile of GC16-T.

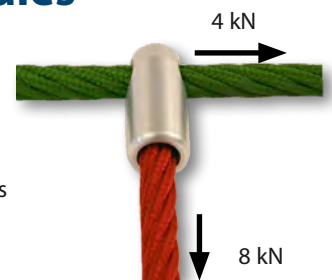


Galvanised carbon steel		
Art no.	Max load approx	Required pressure
GC16-T	10 kN	700 kN

## T-cross joint ferrules

### GCxx-TCK

GCxx-TCK is a ferrule for making T-cross terminations of combination rope. The design is short and slim. Before swaging, the top rope is secured with a screw. It is swaged in a press die with one rounded pocket end.



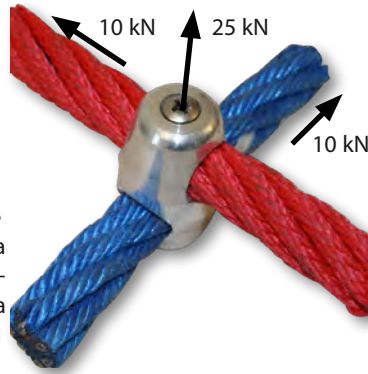
Aluminium		
Art no.	Max load approx	Required pressure
GC16-TCK	4 kN / 8 kN	500 kN
GC18-TCK	4 kN / 8 kN	500 kN
GC20-TCK	X kN / X kN	XXX kN



## Cross joint ferrules

### GCxx-C

GCxx-C is a patented solution to make cross-joints on combination ropes. With specially designed press dies and a special GERRO™ COMBI swager it is possible to press this very slim cross fixing and achieve a very strong compression. Before pressing the ropes are fixed with a screw, which after pressing is non-detachable. The special dies give a very smooth surface and grinding is not required after pressing.



Aluminium		
Art no.	Max load approx	Required pressure
GC16-C	10 kN / 25 kN	70 kN
GC18-C	10 kN / 25 kN	70 kN
GC20-C	XX kN / XX kN	XX kN

## Joint ferrules

### GC16-J



GC16-J makes it possible to join two ropes in a special designed press die. The ferrule gets a rounded shape. Two rope ends are placed into the ferrule on each side and are then swaged in an efficient way in a pocket die with rounding in both ends.

Aluminium		
Art no.	Max load approx	Required pressure
GC16-J	15 kN	1 000 kN
GC18-J	XX kN	XXXX kN
GC20-J	XX kN	XXXX kN

## Stop ferrules

### GCxx-S



GCxx-S is swaged directly on the combination rope as a stop. The ferrule can also be used as a short end joint, like GC16-J, when slim and short ferrules are required.

Aluminium		
Art no.	Max load approx	Required pressure
GC16-S	10 kN	500 kN
GC18-S	15 kN	500 kN
GC20-S	XX kN	XXX kN

## Other terminations

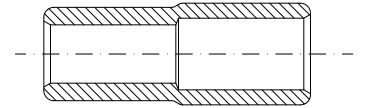
### When there is a will there is a way!

GERRO™ COMBI has a large field of application. We know of some, but for sure there are many others. If you have an idea, we can design and test the product. Your benefit is that you can safely use it in the field. The following ferrules are example of custom fit products.

### GC16/18-J

### GC16/20-J

Looks like GC16-J, but this ferrule combines ropes with two different diameters.



### GC16-P

Joint ferrule for parallel ropes.



### GC16-F

GC16-F is a connection fitting for combination ropes. With the mounted pin the assembly can then be connected to a wire rope or a snap hook.

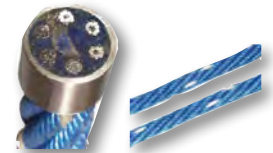


## Combination rope

GERRO™ COMBI Combination Rope is a combination of steel and fibre rope. The rope is preformed with right regular lay. It is also UV protected, which aids the colors from fading. Available in diameters 16, 18 and 20 mm.

### GCxx-RSP

Steel wire strands are covered with polypropylene split film. Color: Blue with white marking yarns in one strand (PP-Split).



### GCxx-RMU

Steel wire strands are covered with Polypropylene (PP) multifilament. Colors: red, blue, green, yellow, black as well as a mix of these.



## Special swager for cross joints



UB-10T is a portable swager for GERRO™ Combi and other net applications. Comes with compact power pack.

**Talurit AB**

Amalia Jönssons gata 29  
421 31 Västra Frölunda  
SWEDEN

Phone: +46 31 709 30 80  
Service: +46 31 709 30 93  
Fax: +46 31 47 10 71  
E-mail: [info@talurit.se](mailto:info@talurit.se)  
Website: [www.talurit.com](http://www.talurit.com)

**Talurit (UK) Ltd**

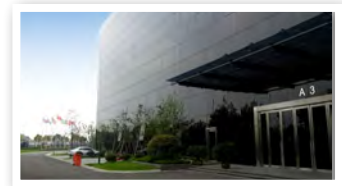
Unit 4 Shortwood Court  
Shortwood Business Park  
Hoyland Barnsley  
South Yorkshire  
ENGLAND S74 9LH

Phone: +44 1226 369960  
Fax: +44 1226 361862  
E-mail: [sales@talurit.co.uk](mailto:sales@talurit.co.uk)  
Website: [www.talurit.com](http://www.talurit.com)

**Gerro GmbH**

Carl-Benz-Strasse 1  
78244 Gottmadingen  
GERMANY

Phone: +49 7731 97030  
Fax: +49 7731 970317  
E-mail: [info@gerro.de](mailto:info@gerro.de)  
Website: [www.gerro.com](http://www.gerro.com)

**Talurit Machinery (Ningbo) Co., Ltd**

No. 982 Mingzhou Road, Beilun  
Ningbo 315800, Zhejiang  
CHINA

Phone: +86 (574) 86308590  
Fax: +86 (574) 86308591  
E-mail: [vanilla.chen@talurit.cn](mailto:vanilla.chen@talurit.cn)  
Website: [www.talurit.cn](http://www.talurit.cn)



2013-04-05

Scan this QR Code with your smart device to visit our website.